



GAT MONTHLY MEMBERSHIP PROGRESS REPORT

Results as of: 6/30/2022

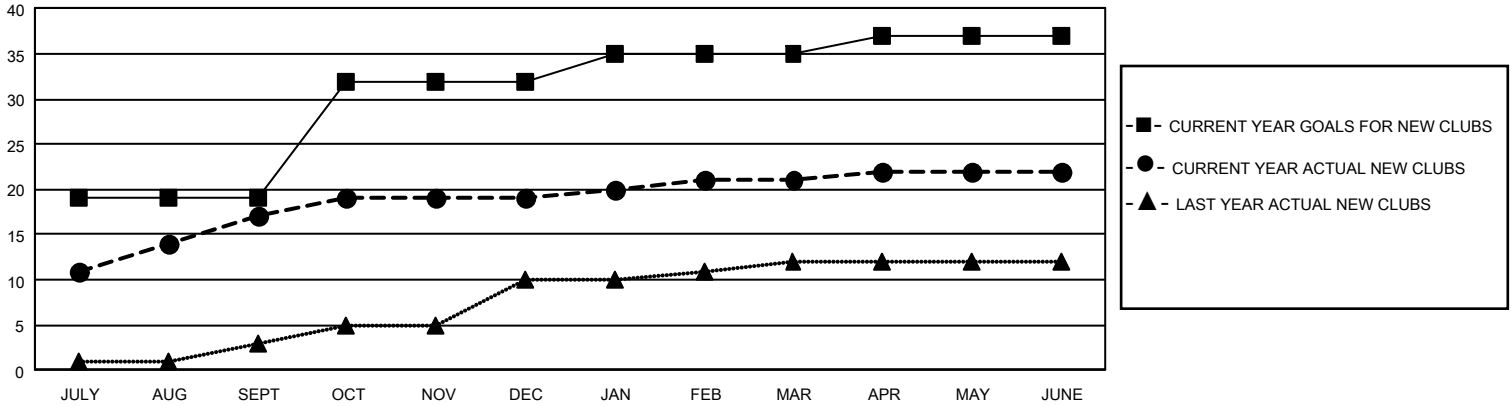
GAT Constitutional Area 5 - MD 300 Taiwan

REPORT DOES NOT INCLUDE CLUBS IN UNDISTRICTED AREAS.

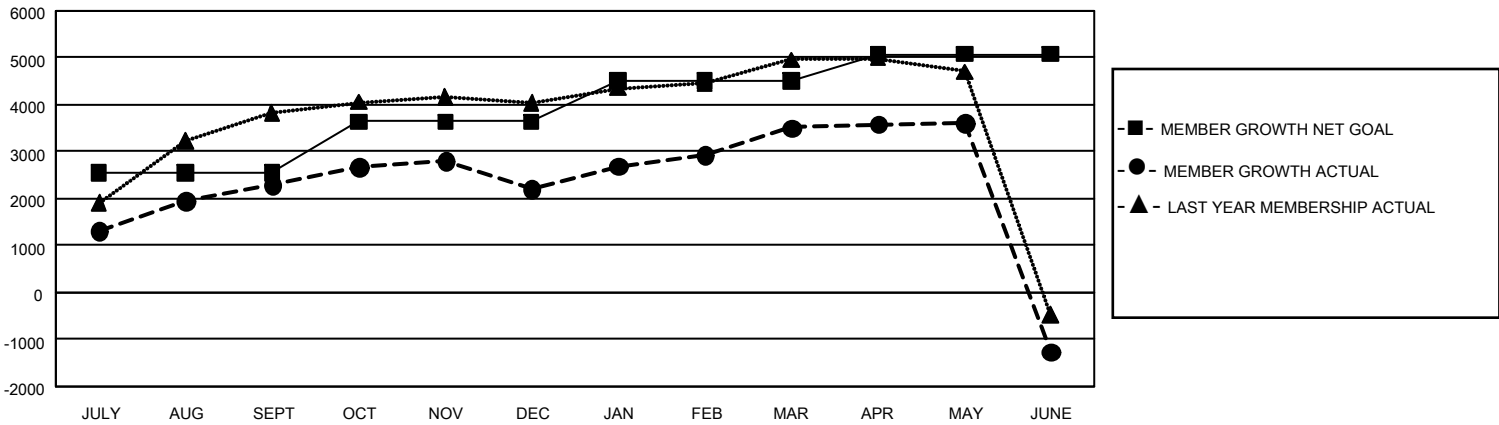
Clubs			
RESULTS FOR 2021-2022			
QUARTER	NEW CLUB GOAL	NEW CLUBS	DROPPED CLUBS
JULY/AUG/SEPT	57	17	8
OCT/NOV/DEC	39	2	5
JAN/FEB/MAR	9	2	4
APR/MAY/JUNE	6	1	2

Members			
RESULTS FOR 2021-2022			
QUARTER	MEMBER GROWTH NET GOAL	MEMBER GROWTH ACTUAL	DROPPED MEMBERS ACTUAL (including transfers)
JULY/AUG/SEPT	2540	4,124	1,480
OCT/NOV/DEC	1100	1,199	1,128
JAN/FEB/MAR	864	1,727	268
APR/MAY/JUNE	573	336	5,050

GOALS AND ACTUAL NEW CLUBS CUMULATIVE



GOALS AND ACTUAL MEMBERS CUMULATIVE



DROPPED CLUBS: 19	
DROPPED MEMBERS	
DECEASED	129
CLUB CANCELLED	53
OTHER	7,744
TOTAL	7,926

939 CLUBS OF 1,120 ADDED 1 OR MORE NEW MEMBERS

[CLICK HERE FOR CUMULATIVE MEMBERSHIP DATA](#)

GENDER DISTRIBUTION	
MALE	25,560 (66.99%)
FEMALE	12,580 (32.97%)
NON BINARY	0 (0.00%)
PREFER NOT TO ANSWER	16 (0.04%)
TOTAL FAMILY UNIT MEMBERS	6,687
FAMILY MEMBERS PAYING HALF DUES	4,022